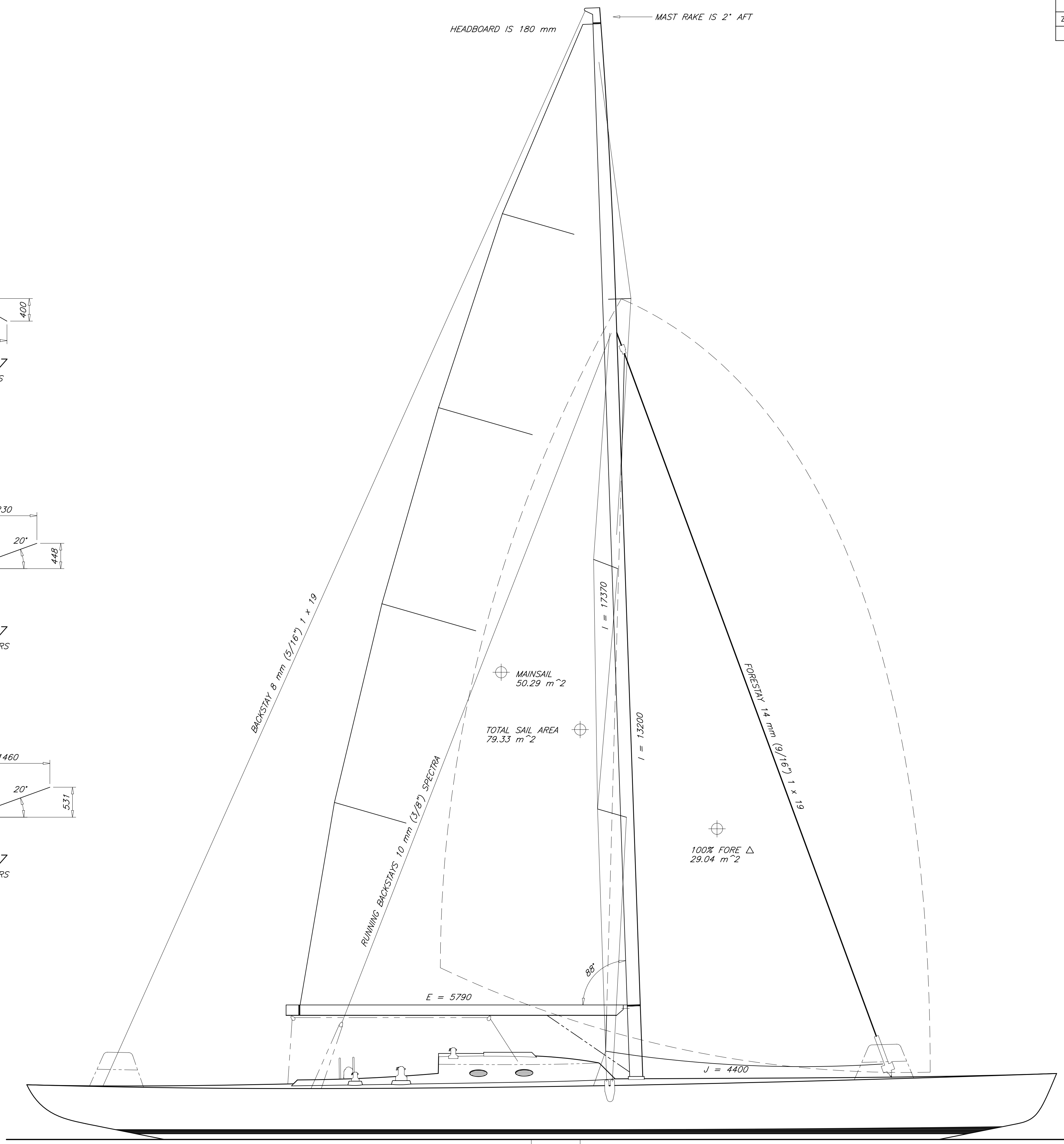
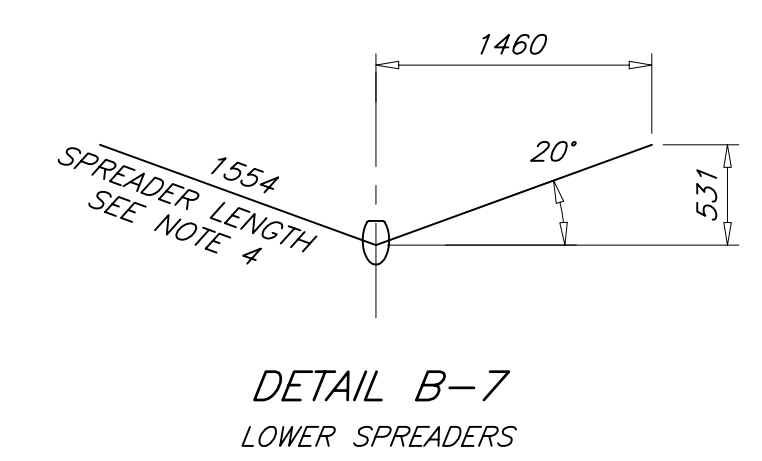
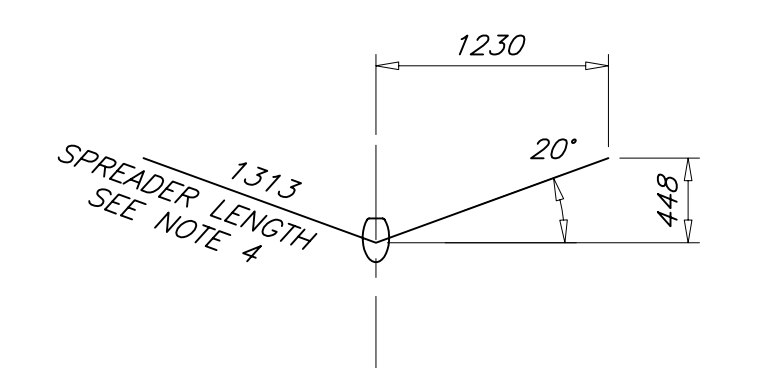
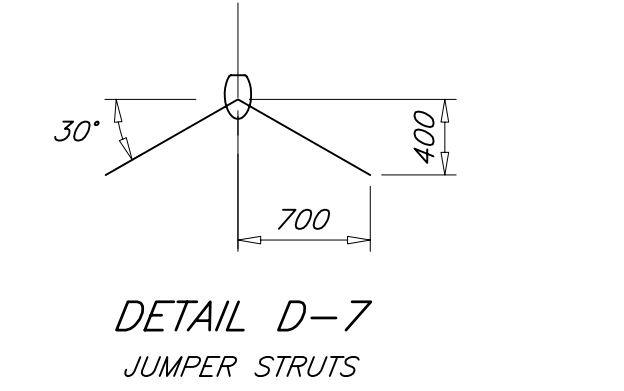
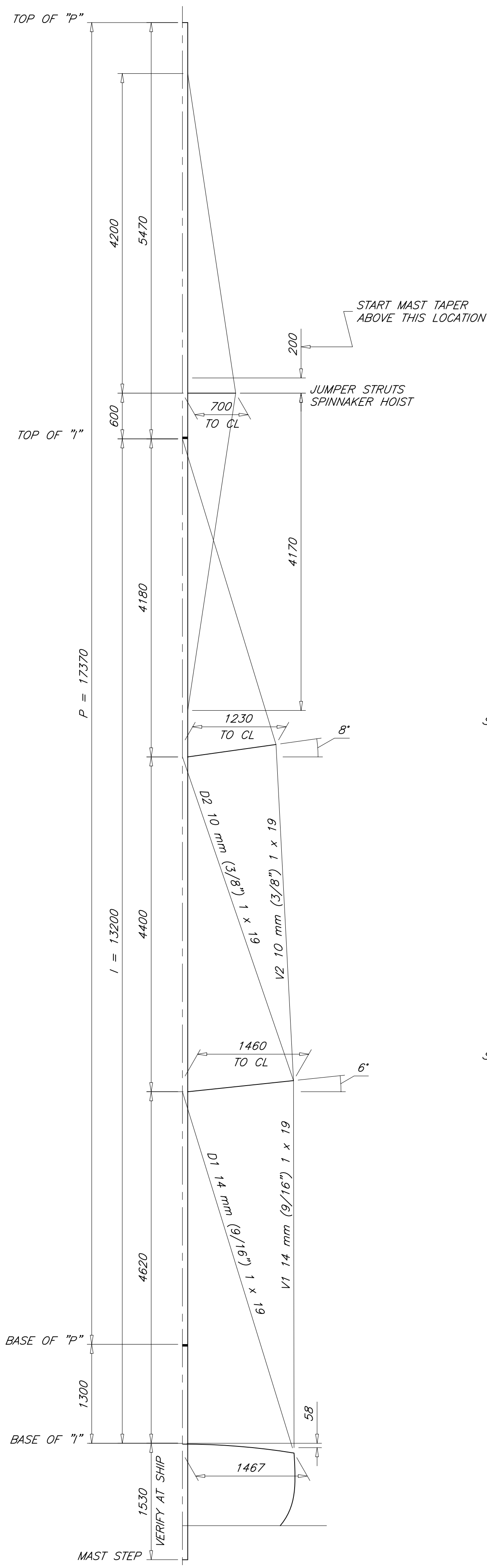


REVISIONS				
ZONE	REV	DESCRIPTION	DATE	APPROVED
ALL	-	ORIGINAL ISSUE	4 OCT 09	P. KOTZEBUE



GENERAL NOTES

- RIGHTING MOMENT AT 1 DEG = 186 kg*m
RIGHTING MOMENT AT 30 DEG = 4610 kg*m
- MINIMUM MAST MOMENT OF INERTIA:
I_{xx} = 1735 cm⁴
I_{yy} = 453 cm⁴
SUGGESTED SECTION IS KENYON 5591 OR EQUAL
TAPER TIP TO 60% MAXIMUM SECTION
- MINIMUM BOOM SECTION MODULUS:
94.4 cm³ (HORIZONTAL AXIS)
SUGGESTED SECTION IS KENYON 5072 OR EQUAL
- SPREADER LENGTHS ARE TRUE LENGTH FROM MAST CL TO SPREADER TIP.
- SEE REFERENCE 1 FOR POSITION OF GENOA TRACK.
- MAINSAIL GIRTHS ARE NOT TO EXCEED IMS MAXIMUMS. SEE IMS B26.
- MAINSAIL BATTENS TO BE PER SAILMAKER'S RECOMMENDATION.



Paul R. Kotzebue

1	DECK PLAN	04-B3
NO	TITLE	DWG NO
REFERENCES		
STOCK PLANS		
18.2 METER SKERRY CRUISER		
SAIL PLAN		
DRAFTER:	DATE:	SCALE:
PK	04 OCT 09	ARCH D
CHECKER:	DATE:	SCALE:
PK	04 OCT 09	1 : 40
SIZE:	DWG NO:	REV:
ARCH D	04-D1	-
SWBS:	SHEET:	1 OF 1
--		

THIS DRAWING REMAINS THE PROPERTY OF PAUL R. KOTZEBUE, PE AND MAY NOT BE USED FOR ANY PURPOSE WITHOUT WRITTEN CONSENT.