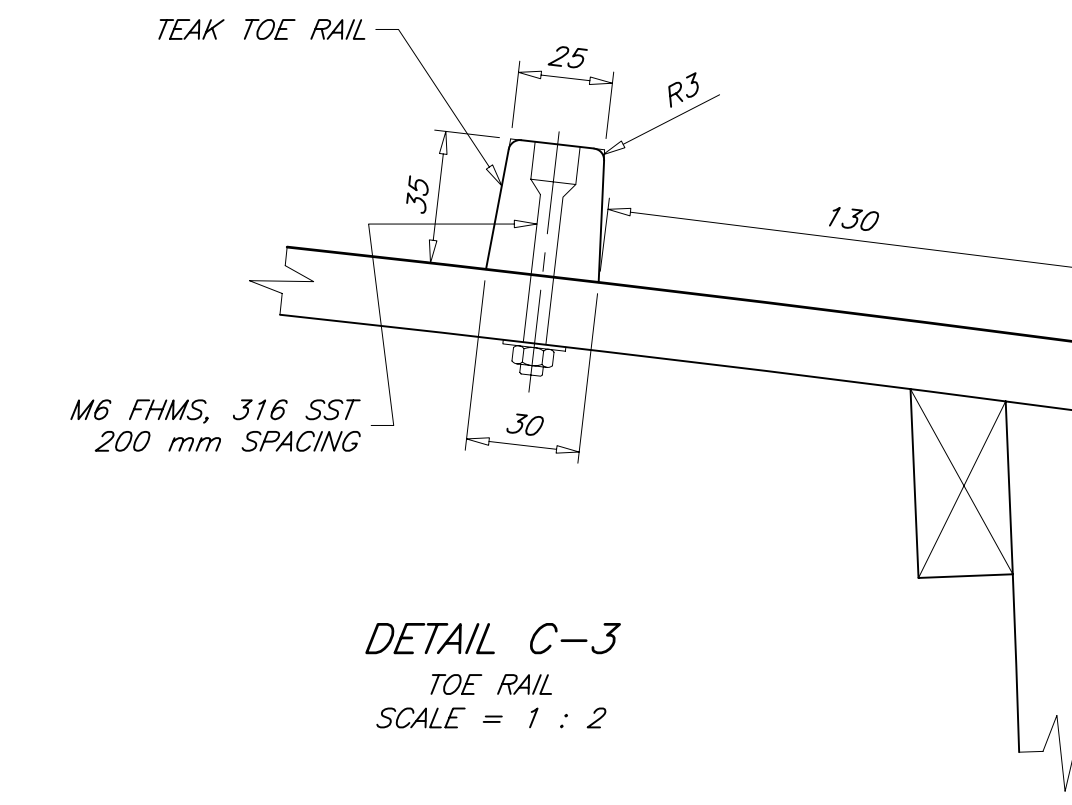
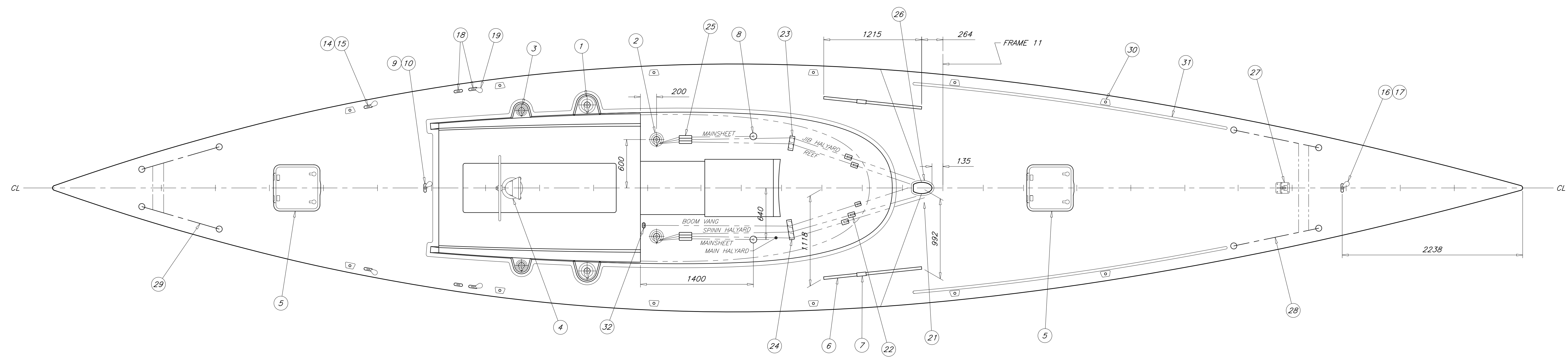


PARTS LIST				PARTS LIST					
NO.	QTY	DESCRIPTION	MANUFACTURER	MODEL NO	NO.	QTY	DESCRIPTION	MANUFACTURER	MODEL NO
1	2	PRIMARY WINCHES	LEWMAR	54ST ALLOY	17	1	SPINNAKER TACK BLOCK	SCHAEFER	09-05
2	2	MAINSHEET / HALYARD WINCHES	LEWMAR	44ST ALLOY	18	4	RUNNING BACKSTAY PADEYES	SCHAEFER	78-25 WITH 78-26 BACKING PLATE
3	2	RUNNING BACKSTAY WINCHES	LEWMAR	30ST ALLOY	19	2	RUNNING BACKSTAY BLOCKS	SCHAEFER	09-05
4	1	PEDESTAL STEERER	EDSON	336 SERIES PEDESTAL STEERER	20	-	R E S E R V E D	---	---
5	1	DECK HATCHES	LEWMAR	OCEAN SERIES 60	21	5	MAST BASE BLOCKS	SCHAEFER	32-06-UC
6	2	1 1/4" GENOA TRACK	SCHAEFER	40-24	22	5	OVER THE TOP BLOCKS	SCHAEFER	706-40
7	2	GENOA LEAD CARS / BLOCKS	SCHAEFER	32-97	23	1	(2) SHEAVE ORGANIZER	SCHAEFER	704-80
8	2	MAINSHEET STANDUP BLOCKS	SCHAEFER	09-62	24	1	(3) SHEAVE ORGANIZER	SCHAEFER	704-81
9	1	MAINSHEET PADEYE	SCHAEFER	78-25 WITH 78-26 BACKING PLATE	25	2	TRIPLE ROPE CLUTCH	SPINLOCK	XTS0814/3
10	1	AFT MAINSHEET BOLCK	SCHAEFER	09-05	26	1	MAST COLLAR	SPAR MGFR	PER MANUFACTURER
11	1	AFT MAINSHEET BOOM DOUBLE BLOCK	SCHAEFER	09-23	27	1	FORESTAY CHAINPLATE	CUSTOM	SEE REFERENCE 2
12	2	FWD MAINSHEET BOOM BLOCKS	SCHAEFER	09-05	28	2	BOW RAILS	CUSTOM	25 mm OD x 1.65 mm WALL SST TUBE
13	1	BOOM VANG	FORESPAR	YACHTROD YR-XL	29	2	STERN RAILS	CUSTOM	25 mm OD x 1.65 mm WALL SST TUBE
14	2	SPINNAKER SHEET PADEYES	SCHAEFER	78-25 WITH 78-26 BACKING PLATE	30	12	LIFELINE STANCHIONS	SIGNET MARINE	610 mm WITH MINI BRACE
15	2	SPINNAKER SHEET BLOCKS	SCHAEFER	09-05	31	2	TOE RAILS	CUSTOM	SEE DETAIL C-3
16	1	SPINNAKER TACK PADEYE	SCHAEFER	78-25 WITH 78-26 BACKING PLATE	32	1	BOOM VANG CAM CLEAT	SCHAEFER	70-29

REVISIONS				
ZONE	REV	DESCRIPTION	DATE	APPROVED
ALL	-	ORIGINAL ISSUE	10 OCT 09	P. KOTZEBUE



- ITEMS NOT SHOWN:
- (11) AFT MAINSHEET BOOM BLOCK
  - (12) FWD MAINSHEET BOOM BLOCKS
  - (13) BOOM VANG



GENERAL NOTES

1. EQUIVALENT SUBSTITUTIONS FROM DIFFERENT MANUFACTURERS MAY BE MADE FOR ANY ITEM IN PARTS LIST.
2. STAINLESS STEEL BACKING PLATES AND/OR FENDER WASHERS TO BE USED FOR ALL THRU-BOLTED DECK HARDWARE.
3. SEE REFERENCE 1 FOR STEERING SYSTEM INSTALLATION.
4. SEE REFERENCE 2 FOR CHAINPLATE DETAILS.
5. BOW AND STERN RAILS TO COMPLY WITH ISAF OFFSHORE SPECIAL REGULATIONS.

PLAN A-5  
DECK ARRANGEMENT



PAUL R. KOTZEBUE, PE  
MECHANICAL ENGINEER  
Encinitas, California USA

2	CHAINPLATES	04-D2
1	AFT INSTALLATIONS	04-E1
NO	TITLE	DWG NO
REFERENCES		
STOCK PLANS		
18.2 METER SKERRY CRUISER		
DECK PLAN		
DRAFTER:	PK	DATE: 10 OCT 09
CHECKER:	PK	DATE: 10OCT 09
SIZE:	ARCH D	DWG NO. 04-B3
SCALE:	1 : 25	SWBS --
REV:	-	SHEET: 1 OF 1

THIS DRAWING REMAINS THE PROPERTY OF PAUL R. KOTZEBUE, PE AND MAY NOT BE USED FOR ANY PURPOSE WITHOUT WRITTEN CONSENT.